

Rate of Change

Currency	Last Price	1 day	5 days	30 days	90 days	
USD-IDR	9340	120	1.3 %	2.3 %	3.4 %	3.7 %

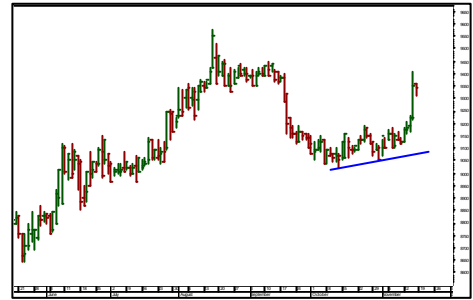
Commodity

Nikel	31695	-1505	-4.5 %	-3.2 %	2.9 %	-4.8 %
Timah	17375	-200	-1.1 %	3.6 %	8.3 %	22.7 %
Emas	792.5	-19.5 *	-2.4 % *	-4.7 %	6.7 %	18.8 %
Minyak	93.4	2.3 *	2.5 % *	-2.1 %	14.7 %	28.9 %
CPO	2942	8	0.3 %	-1.9 %	14.5 %	17.3 %

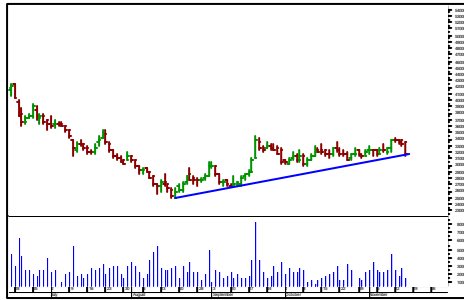
Index

DJIA	13110.0	-121.0	-0.9 %	-1.2 %	-6.2 %	-3.4 %
N225	15148.0	-248.3	-1.6 %	-2.8 %	-11.4 %	-17.1 %
HSI	28751.2	-414.8	-1.4 %	0.0 %	4.6 %	26.0 %
STI	3430.5	-47.1	-1.4 %	-4.7 %	-9.3 %	-4.6 %
IHSG	2705.8	13.9	0.5 %	1.0 %	12.8 %	21.5 %

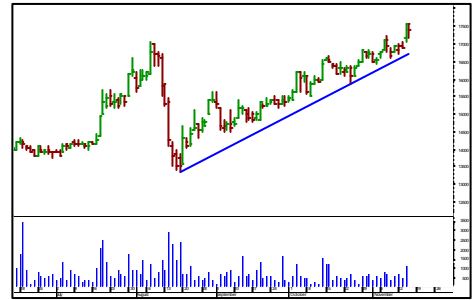
last update: 16 Nov '07 , 7:50AM \*morning to t-2closing



USD-Rupiah



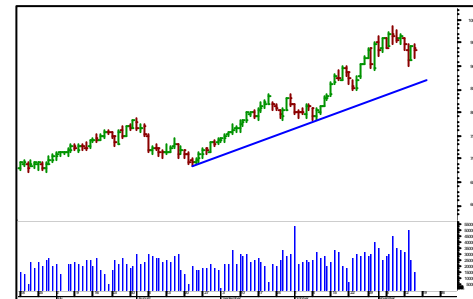
Nikel



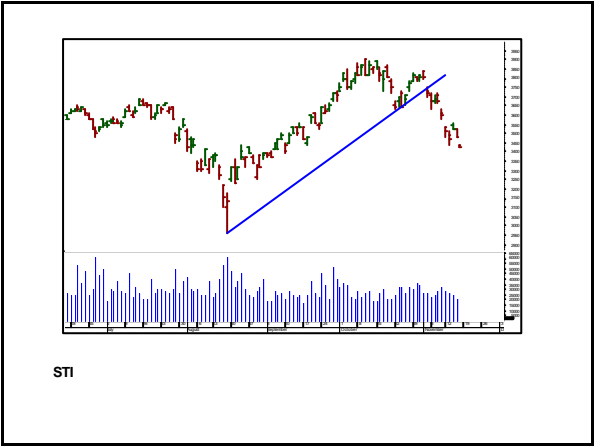
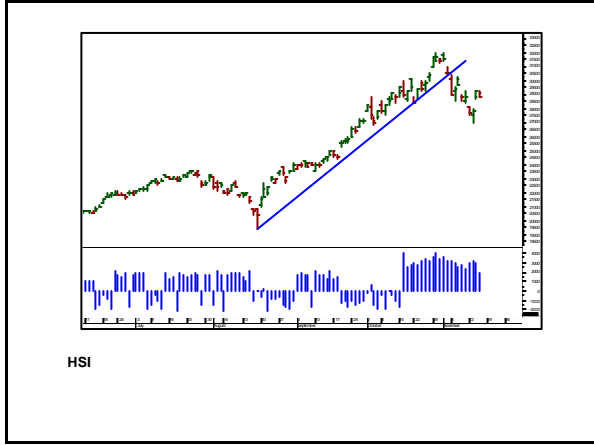
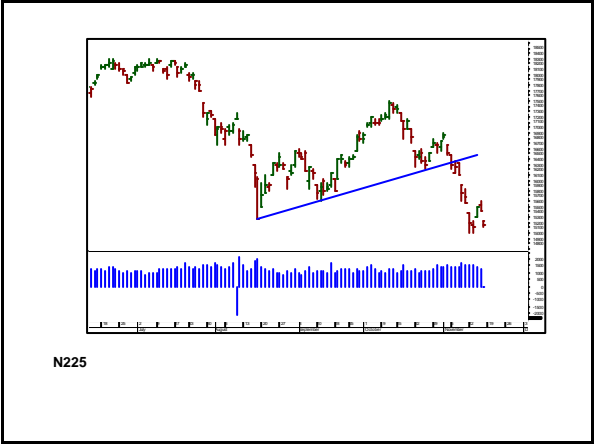
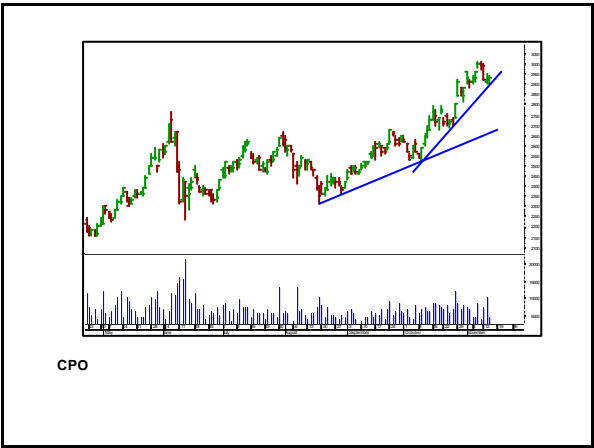
Timah



Emas



Minyak mentah





IHSG Intraday



Nickel - INCO



Nickel Gold ANTM



Tin - TINS



CPO - AALI

## Disclaimer

This document is based on information obtained from sources which we believe to be reliable but we do not represent that it is accurate or complete. Neither the information nor the opinion expressed herein constitutes, or is to be construed as an offer or the solicitation of offer to sell or buy securities referred to herein. Opinions and estimates constitute our judgment at the date of the document and may change without notice. This document is for the information of clients only and must not be copied, reproduced or made available to others. © Sarjaya Permana Securities 2007